

CERTIFICATE OF AUTHENTICITY

Number of certificate: 5

We hereby certify that the art glass work mentioned in this certificate is an original piece designed by Timo Sarpaneva.

The name of the piece if known:	Smile
Year of manufacturing:	1994
Place of manufacturing:	Iittala, Finland
Signature of the piece:	Smile Timo Sarpaneva Iittala 1994
Height of the piece:	21 cm
Width of the piece:	26 cm

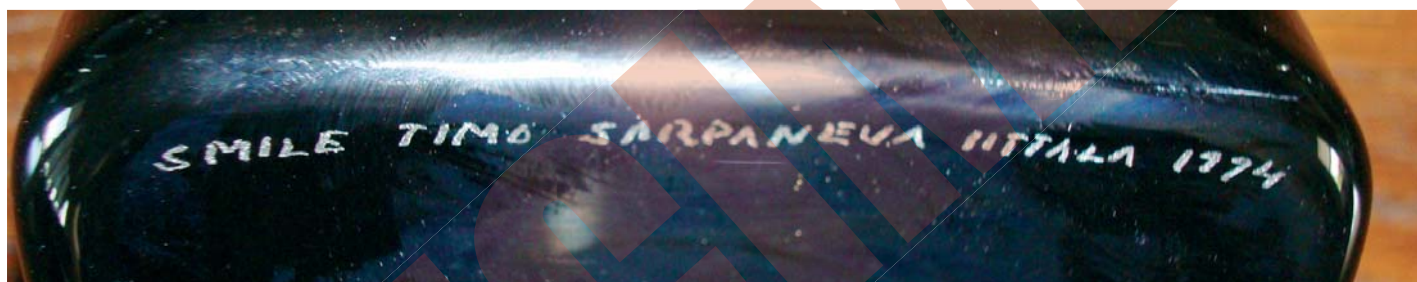
Picture as seen from the front



Picture as seen from the side:



Signature:



Certificate issued by Sarpaneva Design Ltd / Tom Sarpaneva

Helsinki 7th of august 2009

Tom Sarpaneva

This certificate is not a certificate of value, just a certificate of authenticity.